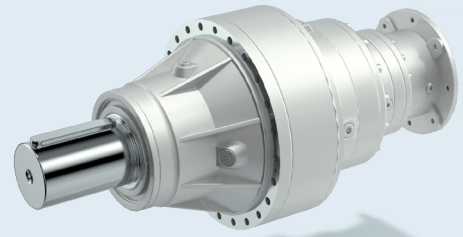


## PLANETARY

### 300M Series

The 300M Series is an outstanding solution for all heavy-duty applications where compactness and flexibility are a must. Thanks to its modular design, the 300M series can be customized to match an extremely wide range of applications. This planetary gearbox achieves top-class flexibility thanks to the various available output and input configurations and the compatibility with both electric and hydraulic motors. Furthermore, it has a highly transmissible torque/weight ratio and operates without unwanted downtime even in harsh environment or in potentially explosive gas and dust atmospheres



ATEX AVAILABLE

### MAIN BENEFITS

- High torque density & peak load capacity
- Max flexibility & high performance to meet any reduction ratio
- Minimized mounting space and weight
- Low maintenance costs

### MAIN OPTIONS

<b>Design</b>		<b>Stages</b>				<b>Input versions</b>			
IN-LINE	RIGHT ANGLE	1 STAGE	2 STAGES	3 STAGES	4 STAGES	INPUT KEYED SHAFT	IEC	NEMA	HYDRAULIC
<b>Cooling</b>			<b>Oil seal (single/double)</b>			<b>Surface protection</b>			
INPUT FAN	IEC/NEMA with integrated fan	AIR/OIL COOLING UNIT	NBR	FKM	TACONITE	PAINTING CLASS UP TO C5			
<b>Torque arm</b>		<b>Output versions</b>				<b>Output fittings</b>			
TORQUE ARM	HOLLOW SHAFT	SOLID SHAFT	FLANGE	FEET	FLANGE	SHRINK DISK	PINION		

### TECHNICAL DATA

Sizes	Nominal torque <sup>(1)</sup>	Gear ratio range	Adapter size range	
	[Nm]		IEC	NEMA
300	1,250	3.48-2692	71-132	N56-N280
301	2,460	3.48-2692	71-132	N56-N280
303	2,970	3.60-2799	71-200	N56-N280
304	3,960	3.60-2453	71-200	N56-N280
305	5,800	3.60-2799	71-200	N56-N280
306	10,840	3.60-2916	71-250	N56-N360
307	15,680	3.43-2423	71-250	N56-N360
309	23,240	3.43-2423	71-250	N56-N360
310M	33,460	4.09-2523	71-250	N56-N360
311M	49,210	4.09-2096	71-250	N56-N360
313M	60,940	4.14-2187	71-250	N56-N360
314M	80,640	4.25-1796	132-250	N250-N360
315M	100,800	4.25-1805	132-250	N250-N360
316M	134,390	4.25-1553	132-250	N320-N360
317M	207,490	4.09-1893	132-250	N320-N360
318M	297,550	4.40-1059	180-250	N320-N360
319	471,190	4.08-1389	180-250	N320-N360
321	655,740	4.44-1122	180-250	N320-N360
323	890,310	4.60-1280	200-250	N400
325	1,286,000	4.60-1280	200-250	N400

(1) The Nominal Torque is the torque rating representative of the size. The value can change with gear ratio

